

To arrange a viewing contact us
today on 01268 777400



Hawkesbury Close, Canvey Island Offers in the region of £600 000

Aspire Estate Agents are proud to present this stunning detached family home, ideally positioned in the heart of Canvey Island—just a short walk from local schools, shops, and a range of amenities.

As you step inside, you're welcomed by a spacious entrance hall, with a convenient downstairs WC to the right. The kitchen truly is the heart of the home—offering ample worktop space and storage, it's the perfect environment for family cooking and entertaining. The adjoining dining area provides a generous space for gatherings, complete with patio doors opening onto the rear garden. The separate lounge features a central fireplace, creating a warm and inviting retreat, while the study offers the ideal work-from-home solution.

Upstairs, you'll find four well-proportioned double bedrooms, all served by a modern family bathroom.

Externally, the property continues to impress. A self-contained guest bedroom with its own WC and access to the garage provides excellent versatility for visitors or extended family.

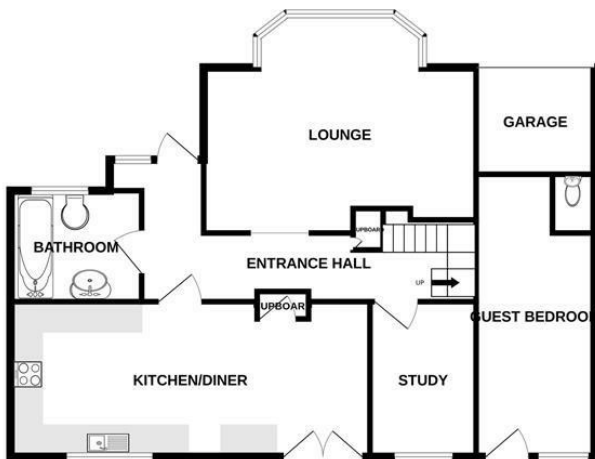
Additionally, the stunning outbuilding could serve as the perfect annexe. Featuring its own WC and dual access via front and side doors, it welcomes in an abundance of natural light—ideal as a studio, office, or independent living space.

To the front, the driveway offers ample parking for 3–4 vehicles, while the rear garden presents a superb space for relaxing or entertaining.

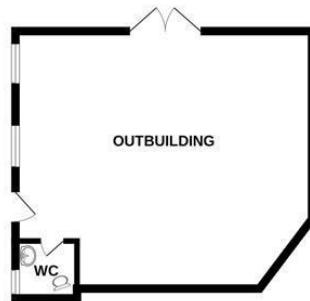
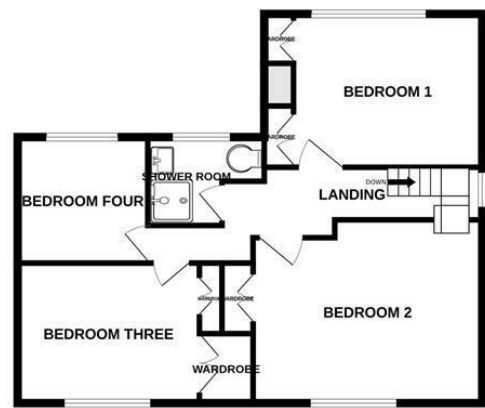
Location highlights include:

www.aspireestateagents.co.uk

GROUND FLOOR
1412 sq.ft. (131.2 sq.m.) approx.



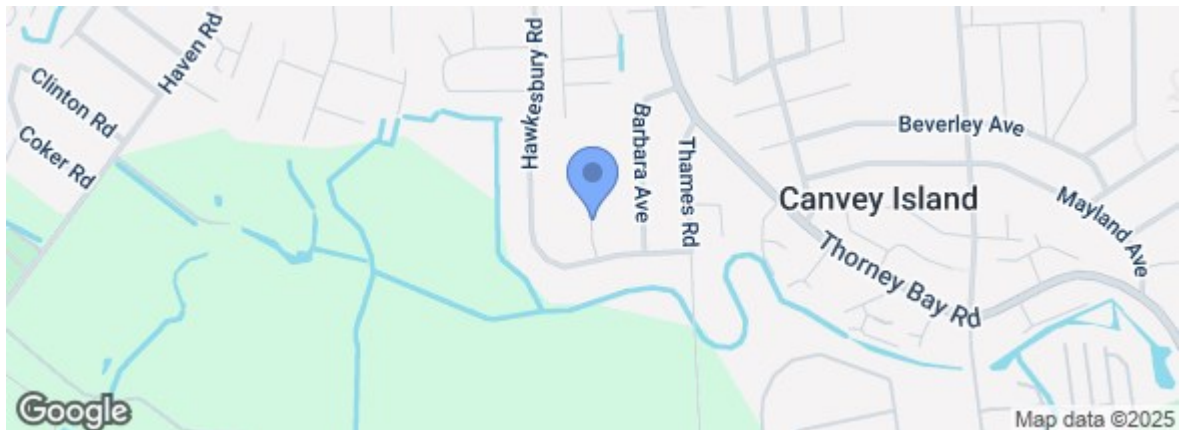
1ST FLOOR
733 sq.ft. (68.1 sq.m.) approx.



TOTAL FLOOR AREA : 2145 sq.ft. (199.3 sq.m.) approx.

Whilst every attempt has been made to ensure the accuracy of the floorplan contained here, measurements of doors, windows, rooms and any other items are approximate and no responsibility is taken for any error, omission or mis-statement. This plan is for illustrative purposes only and should be used as such by any prospective purchaser. The services, systems and appliances shown have not been tested and no guarantee as to their operability or efficiency can be given.
Made with Metropix ©2025

Energy Efficiency Rating		Current	Potential
Very energy efficient - lower running costs			
(92 plus)	A		
(81-91)	B		
(69-80)	C		
(55-68)	D		
(39-54)	E	51	
(21-38)	F		
(1-20)	G		
Not energy efficient - higher running costs			
England & Wales EU Directive 2002/91/EC			
Environmental Impact (CO ₂) Rating		Current	Potential
Very environmentally friendly - lower CO ₂ emissions			
(92 plus)	A		
(81-91)	B		
(69-80)	C		
(55-68)	D		
(39-54)	E		
(21-38)	F		
(1-20)	G		
Not environmentally friendly - higher CO ₂ emissions			
England & Wales EU Directive 2002/91/EC			



Under the Property Misdescriptions Act 1991 we make every effort to ensure our sales details are accurate but they are a general outline and do not constitute any part of an offer or contract. Any services, equipment and fittings have not been tested and no warranty can be given as to their condition. We strongly recommend that all the information provided be verified by your advisors and in particular, measurements required for a specific purpose such as fitted furniture or carpets. Please tell us if you have any problems and members of our branches will help either over the phone or in person. A copy of our complaints procedure is available on request. The details are issued on the strict understanding that any negotiations in respect of the property named herein are conducted through Aspire Estate Agents.